

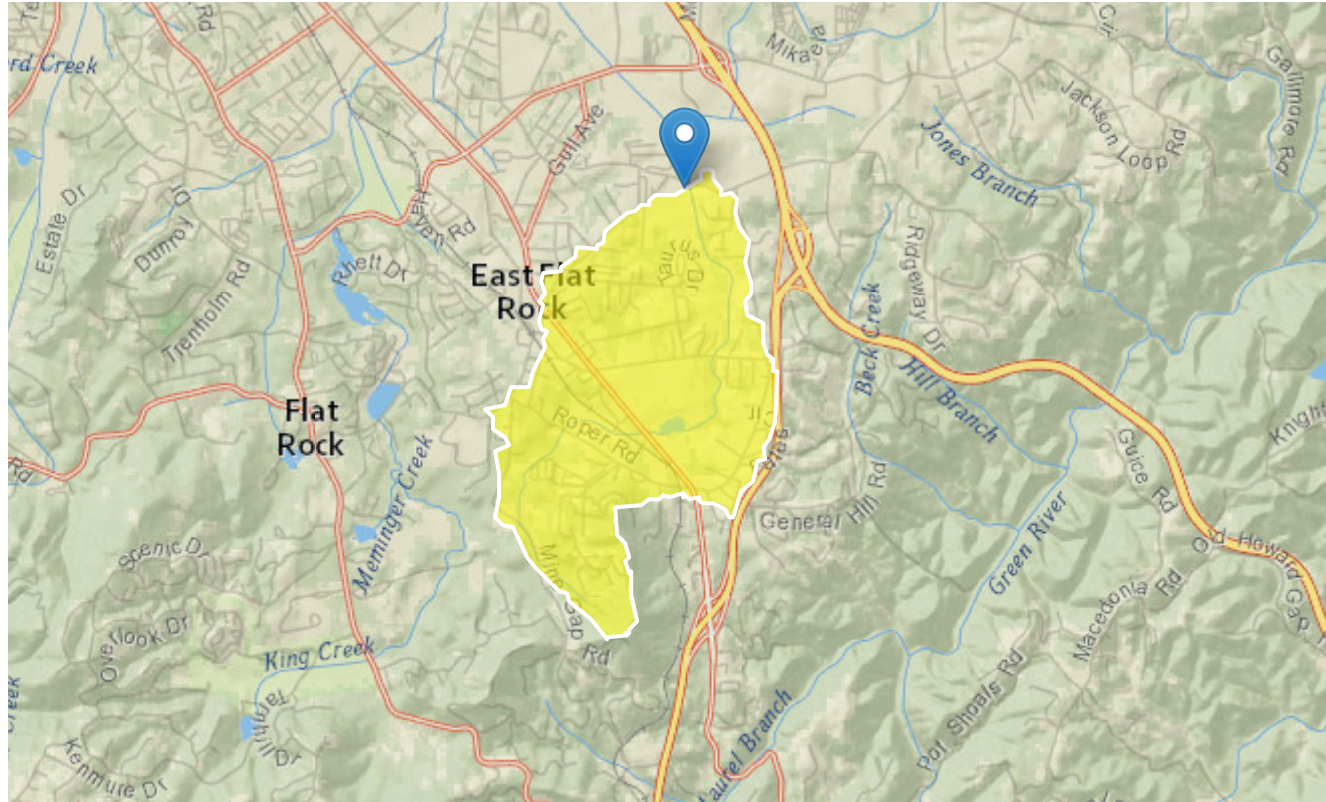
StreamStats Report

Region ID: NC

Workspace ID: NC20190911154916070000

Clicked Point (Latitude, Longitude): 35.28870, -82.40971

Time: 2019-09-11 11:49:31 -0400



Basin Characteristics

Parameter

Code	Parameter Description	Value	Unit
------	-----------------------	-------	------

Parameter Code	Parameter Description	Value	Unit
DRNAREA	Area that drains to a point on a stream	1.83	square miles
PCTREG1	Percentage of drainage area located in Region 1	0	percent
PCTREG2	Percentage of drainage area located in Region 2	100	percent
PCTREG3	Percentage of drainage area located in Region 3	0	percent
PCTREG4	Percentage of drainage area located in Region 4	0	percent
PCTREG5	Percentage of drainage area located in Region 5	0	percent
BASINPERIM	Perimeter of the drainage basin as defined in SIR 2004-5262	8.61	miles
BSLDEM30FT	Mean basin slope, based on slope percent grid	8.45	percent
CSL10_85fm	Change in elevation between points 10 and 85 percent of length along main channel to basin divide divided by length between points ft per mi	56.79	feet per mi
ELEV	Mean Basin Elevation	2200	feet
ELEVMAX	Maximum basin elevation	2670	feet
I24H50Y	Maximum 24-hour precipitation that occurs on average once in 50 years	7.65	inches
LC01BARE	Percentage of area barren land, NLCD 2001 category 31	0.169	percent
LC01CRPHAY	Percentage of cultivated crops and hay, classes 81 and 82, from NLCD 2001	17.114	percent
LC01DEV	Percentage of land-use from NLCD 2001 classes 21-24	54.51	percent
LC01FOREST	Percentage of forest from NLCD 2001 classes 41-43	25.052	percent
LC01HERB	Percentage of herbaceous upland from NLCD 2001 class 71	1.908	percent
LC01IMP	Percent imperviousness of basin area 2001 NLCD	10.76	percent
LC01SHRUB	Percent of area covered by shrubland using 2001 NLCD	1.019	percent
LC01WATER	Percentage of open water, class 11, from NLCD 2001	0.227	percent
LC01WETLND	Percentage of wetlands, classes 90 and 95, from NLCD 2001	0	percent

Parameter Code	Parameter Description	Value	Unit
LC06BARE	Percent of area covered by barren rock using 2006 NLCD	0.169	percent
LC06DEV	Percentage of land-use from NLCD 2006 classes 21-24	54.51	percent
LC06FOREST	Percentage of forest from NLCD 2006 classes 41-43	25.052	percent
LC06GRASS	Percent of area covered by grassland/herbaceous using 2006 NLCD	1.908	percent
LC06IMP	Percentage of impervious area determined from NLCD 2006 impervious dataset	11.19	percent
LC06PLANT	Percent of area in cultivation using 2006 NLCD	17.114	percent
LC06SHRUB	Percent of area covered by shrubland using 2006 NLCD	1.019	percent
LC06WATER	Percent of open water, class 11, from NLCD 2006	0.227	percent
LC06WETLND	Percent of area covered by wetland using 2006 NLCD	0	percent
LC11BARE	Percentage of barren from NLCD 2011 class 31	0	percent
LC11CRPHAY	Percentage of cultivated crops and hay, classes 81 and 82, from NLCD 2011	16.843	percent
LC11DEV	Percentage of developed (urban) land from NLCD 2011 classes 21-24	54.8	percent
LC11FOREST	Percentage of forest from NLCD 2011 classes 41-43	24.943	percent
LC11GRASS	Percent of area covered by grassland/herbaceous using 2011 NLCD	1.758	percent
LC11IMP	Average percentage of impervious area determined from NLCD 2011 impervious dataset	11.5	percent
LC11SHRUB	Percent of area covered by shrubland using 2011 NLCD	1.447	percent
LC11WATER	Percent of open water, class 11, from NLCD 2011	0.227	percent
LC11WETLND	Percentage of wetlands, classes 90 and 95, from NLCD 2011	0	percent
LC92FOREST	Percentage of forest from NLCD 1992 classes 41-43	25.441	percent
LFPLENGTH	Length of longest flow path	3.657	miles
LU92BARE	Percent of area covered by barren rock using 1992 NLCD	0.157	percent
LU92DEV	Percent of area covered by all densities of developed land using 1992 NLCD	40.998	percent

Parameter Code	Parameter Description	Value	Unit
LU92PLANT	Percent of area in cultivation using 1992 NLCD	33.251	percent
LU92WATER	Percent of area covered by water using 1992 NLCD	0.153	percent
LU92WETLN	Percent of area covered by wetland using 1992 NLCD	0	percent
MINBELEV	Minimum basin elevation	2100	feet
OUTLETELEV	Elevation of the stream outlet in thousands of feet above NAVD88.	2098	feet
PRECIP	Mean Annual Precipitation	62	inches
PROTECTED	Percent of area of protected Federal and State owned land	0	percent
SSURGOA	Percentage of area of Hydrologic Soil Type A from SSURGO	0	percent
SSURGOB	Percentage of area of Hydrologic Soil Type B from SSURGO	87.8	percent
SSURGOC	Percentage of area of Hydrologic Soil Type C from SSURGO	11.7	percent
SSURGOD	Percentage of area of Hydrologic Soil Type D from SSURGO	0	percent

Peak-Flow Statistics Parameters[Peak Southeast US over 1 sqmi 2009 5158]

Parameter Code	Parameter Name	Value	Units	Min Limit	Max Limit
DRNAREA	Drainage Area	1.83	square miles	1	9000
PCTREG1	Percent Area in Region 1	0	percent	0	100
PCTREG2	Percent Area in Region 2	100	percent	0	100
PCTREG3	Percent Area in Region 3	0	percent	0	100
PCTREG4	Percent Area in Region 4	0	percent	0	100
PCTREG5	Percent Area in Region 5	0	percent	0	100

Peak-Flow Statistics Flow Report^[Peak Southeast US over 1 sqmi 2009 5158]

PII: Prediction Interval-Lower, Plu: Prediction Interval-Upper, SEp: Standard Error of Prediction, SE: Standard Error (other -- see report)

Statistic	Value	Unit	PII	Plu	SEp
2 Year Peak Flood	176	ft ³ /s	99.7	309	34.5
5 Year Peak Flood	329	ft ³ /s	188	575	34
10 Year Peak Flood	450	ft ³ /s	252	803	35.1
25 Year Peak Flood	617	ft ³ /s	333	1140	37.5
50 Year Peak Flood	739	ft ³ /s	385	1420	39.6
100 Year Peak Flood	885	ft ³ /s	446	1760	41.9
200 Year Peak Flood	1010	ft ³ /s	492	2090	44.3
500 Year Peak Flood	1220	ft ³ /s	561	2630	47.7

Peak-Flow Statistics Citations

Weaver, J.C., Feaster, T.D., and Gotvald, A.J., 2009, Magnitude and frequency of rural floods in the Southeastern United States, through 2006—Volume 2, North Carolina: U.S. Geological Survey Scientific Investigations Report 2009–5158, 111 p. (<http://pubs.usgs.gov/sir/2009/5158/>)

USGS Data Disclaimer: Unless otherwise stated, all data, metadata and related materials are considered to satisfy the quality standards relative to the purpose for which the data were collected. Although these data and associated metadata have been reviewed for accuracy and completeness and approved for release by the U.S. Geological Survey (USGS), no warranty expressed or implied is made regarding the display or utility of the data for other purposes, nor on all computer systems, nor shall the act of distribution constitute any such warranty.

USGS Software Disclaimer: This software has been approved for release by the U.S. Geological Survey (USGS). Although the software has been subjected to rigorous review, the USGS reserves the right to update the software as needed pursuant to further analysis and review. No warranty, expressed or implied, is made by the USGS or the U.S. Government as to the functionality of the software and related material nor shall the fact of release constitute any such warranty. Furthermore, the software is released on condition that neither the USGS nor the U.S. Government shall be held liable for any damages resulting from its authorized or unauthorized use.

USGS Product Names Disclaimer: Any use of trade, firm, or product names is for descriptive purposes only and does not imply endorsement by the U.S. Government.